



THE
SU
VOICE

Academic Rep Training

A guide on how to become the most
important people on campus

Meet the Team



Georgina

Student Voice
Coordinator (Academic
Representation)



Ryan

Education
Manager



NEW FOR 2023/24

Amber

Education
Officer

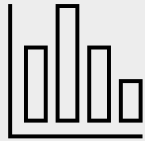


RE-ELECTED FOR 23/24

Jura

Postgraduate
Officer

How we support you



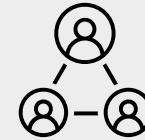
Data

Collect & analyse
data



Chats

Answering queries &
talking through
issues



Networks

Teams, meetings,
email

By end of this session, you will..



...know the main roles and responsibilities of an Academic Rep.



...know the skills and qualities of an effective Academic Rep.



...be able to identify where you can get support.



...know how to connect with other Academic Reps.



...know how to signpost key support services that are available to all students.

What does it mean to be a rep?



What do you think are the
main responsibilities of
being a Rep?

Activity

Why is representation important?

Representation ensures that students have a seat at the table.

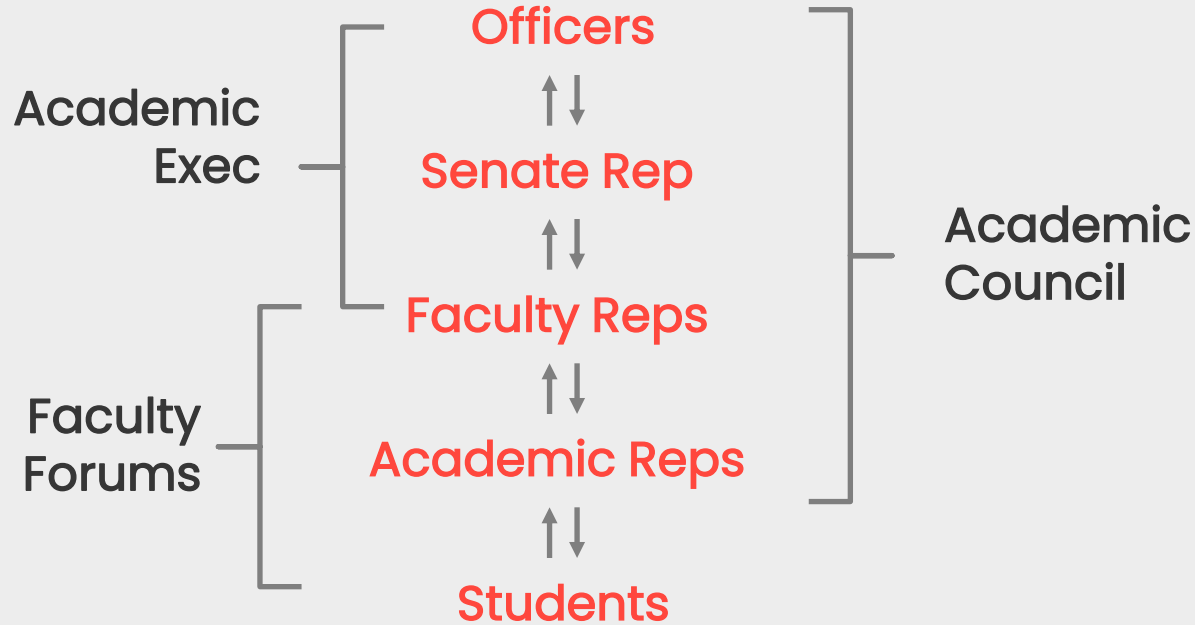
- Advocating for your educational rights and what you are entitled to
- Standing up against poor practice and treatment
- Being included in curriculum creation and what students are taught

What do Academic Reps do?

Collect and represent students' academic feedback from your cohort

- Highlighting positive and negative feedback to academic staff
- Signposting students to appropriate services
- Collaborating with Faculty Reps & SU Officers on wider issues

The SU Voice Structure



The Art of Feedback Gathering



Other online spaces (e.g., WhatsApp, Instagram)

Consider how you could collect feedback within your groups, thinking of ways you engage with. Write in on your flipchart paper.

Face-to-face chats online or in person

Hands up before/after class

How could you collect feedback?

Emails

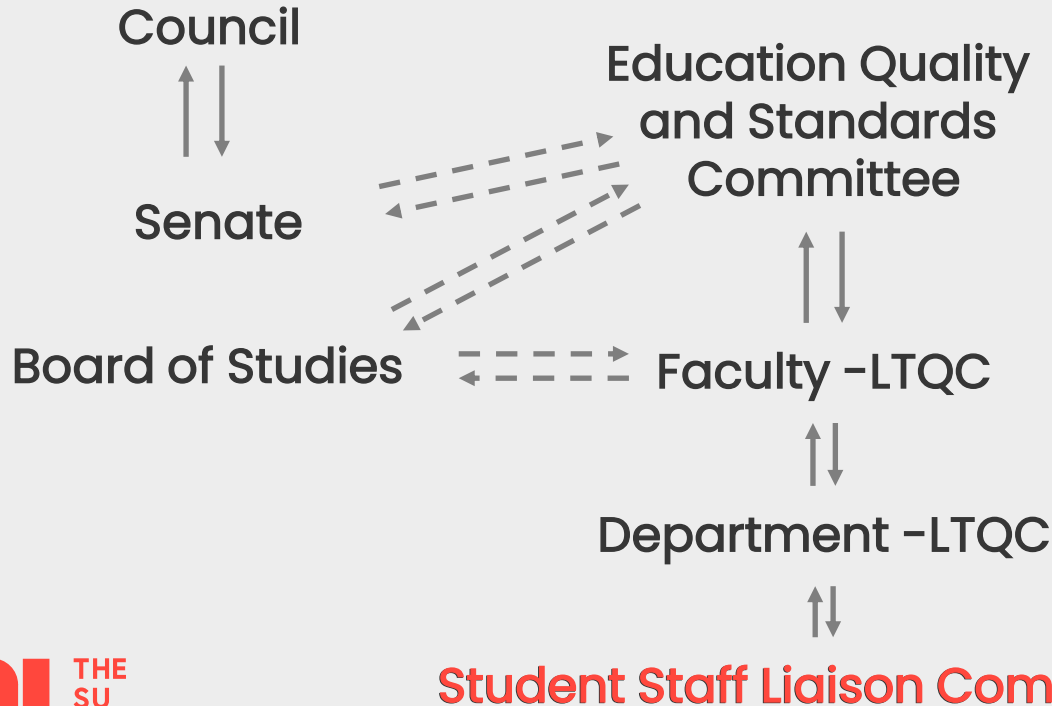
Surveys

Lecture shout outs

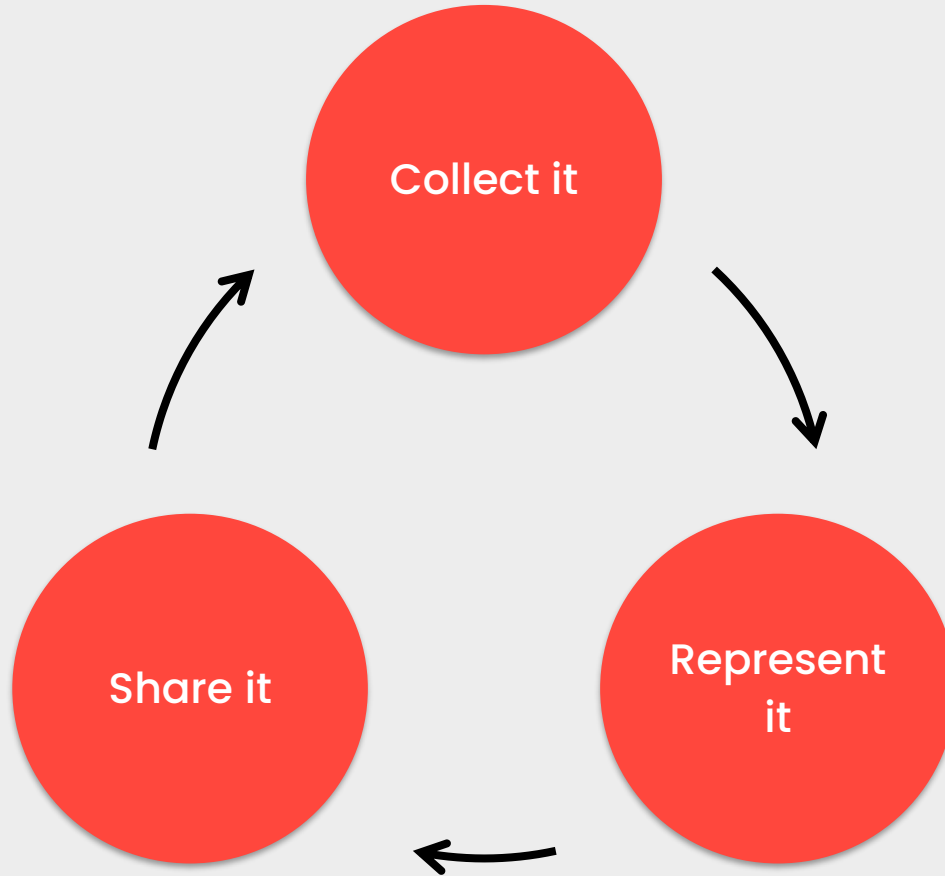
Post-it notes in tutorials

Comment boxes

University Meetings



More about
SSLC's in SSLC
Training!





Collect it

Establish **digital student networks**.

Use Facebook, email, WhatsApp to work with and communicate with your peers.

Use **in-person opportunities** as much as possible. Lecture shout-outs', drop in's, etc.

Make sure you're working with all your peers. Everyone needs to share their own experiences.

Feedback Topics Ideas

- Curriculum transformation
- Teaching on your course
- Assessment and feedback
- Learning Community
- Unit Evaluations
- Academic Support
- Learning Resources



Represent It

Remember, first and foremost you're a **representative**. Representing your peers...

Ensure you're collecting both **positive** and **negative** feedback.

Ensure you're working with students from **across** your cohort. Everyone has **different** experiences.

Everyone likes chocolate, right?

Activity



Majority **rules**, minority **rights**

“important principle in democracy according to which public policy is determined by a majority of citizens, but the majority may not rightfully use its power to deprive minority groups of their rights”

A good Rep is

unbiased

[adjective] “showing no prejudice for or against something; impartial.”



Share It

Work out where **feedback belongs**.
You don't need to wait for an SSLC meeting to
discuss feedback.

Attend your SSLC Meetings.
Make sure to **ask questions** and
contribute to discussions

Communicate wins and losses to your cohort.
You're a community and sharing information
helps everyone to understand more.

Scenario 1

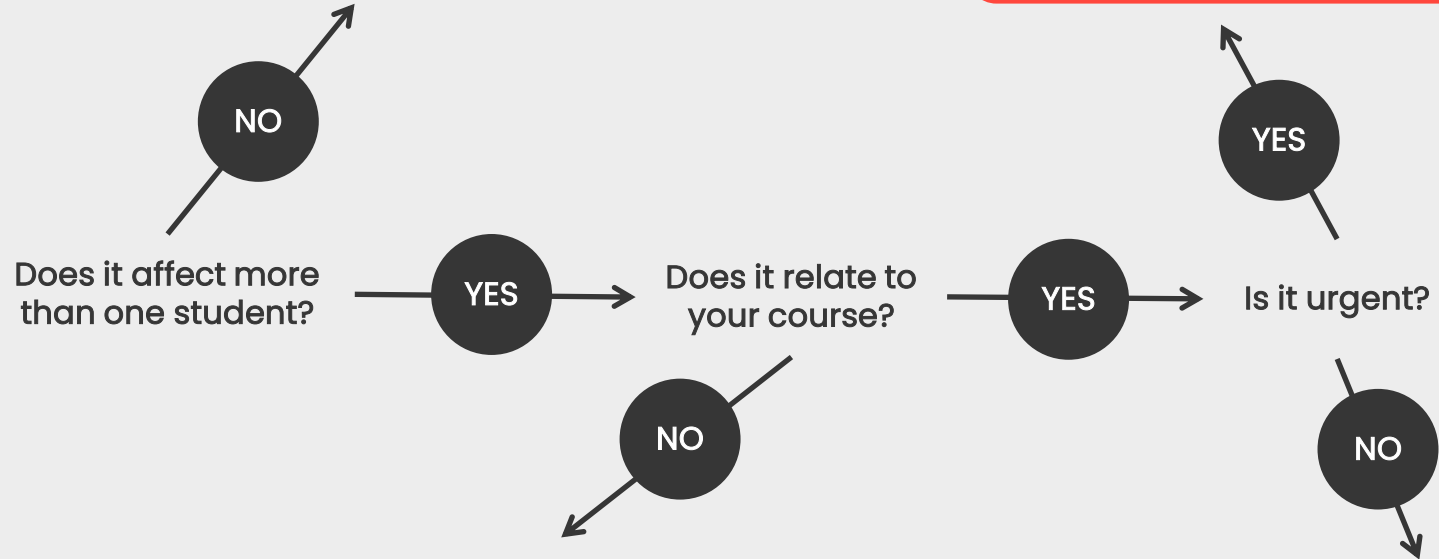
Your course mates come to you because they cannot understand the essay guidelines. They want this resolved quickly as the deadline is just a few weeks away. What do you do?

Scenario 2

One of your course mates contacts you directly. They have been really struggling with the course and are considering dropping out. They are very upset and want support. What do you do?

Sign post them to the relevant service or staff members who can help them with your issue. If you are unsure contact the SU for support

Email or speak with your Director or study or appropriate staff member



Scenario 3

You have your Student-Staff Liaison Committee Meeting tomorrow but you are not aware of any specific issues. What should you do?

Scenario 4

At your Student-Staff Liaison Committee meeting, you let staff know that students are worried about spending money on supplies for the course. Staff respond saying that they are sorry but the course cannot pay for the supplies. What do you do?

A
accurate

B
balanced

C
constructive

D
depersonalised

E
evidenced

Support for Academic Reps





HELLO
HELLO
HELLO



MEET YOUR ELECTED OFFICERS



Jimena Alamo
SU President



David Lam
Activities Officer



Abbie Watkin
Sport Officer



Amber Snary
Education Officer



Jura Never
Postgraduate Officer



Hanna Hajzer
Community Officer



thesubath.com/elections





Academic Council

- Discuss University wide issues
- Hear Updates from your SU Officers and ask questions

Humanities & Social Sciences

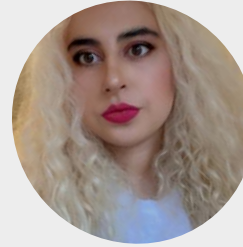


Ahmad Mahmood Alkuchikmulla
Undergraduate



Vacant
Undergraduate

Science



Miranda Yafi
Undergraduate



Ffion Gould
Undergraduate

Management



Kara Signh
Undergraduate



Vacant
Undergraduate

Engineering & Design



Nathanail Georgiou
Undergraduate



Caitlin Grainger-Spivey
Undergraduate

Senate Rep



Vacant until
Election in October

The Senate Representative is elected by all students once a year and represents students at University Senate and also is a member of the SU Academic Executive Committee.



Faculty Forums

- Opportunity to escalate feedback from SSLCs
- Hear Updates from your Faculty Reps
- Discuss key/shared issues affecting departments

The Academic Rep Community



Teams Chat

Academic Reps 23-24

- You have all been invited
- Make sure to say hello and introduce yourselves
- Use your 'faculty' or 'school' based chats – found down the left hand side
- Support one another – ask questions – and meet your fellow academic reps.



REP

of the

Month

- Winner(s) every month announced in the Rep newsletter
- Prize
 - A Rep of the Month mug
 - An article celebrating how amazing they are
 - A LinkedIn recommendation

REP RECOGNITION *Scheme*

- Earn points throughout the year and see whether you can reach Gold.
- Bronze (100 points)
 - Academic Rep Travel Mug
- Silver (200 points)
 - University branded hoodie
- Gold (300 points)
 - Certificate awarded at Education Awards and LinkedIn Recommendation

Category	Activity	Points for Completion
Rep Essentials	Complete initial Start Up Survey	5
	Complete Rep Training (101 or Refresher and SSLC)	10
	Attend Academic Council	10 (up to three times)
	Attend SSLC	10 (up to three times)
	Attend Faculty Forums	10 (up to three times)
	Attend Voice Conference	15
Community	Become a member of an Academic Society	10
	Attend one Rep social event (e.g., volunteer breakfast, end of semester celebration etc.)	15
	Run an Academic Rep Coffee morning for your cohort	20
Lead & Change	Submit an Idea to Action	15
	Submit a standpoint for Summit	15
	Become an SSLC Chair	20
	Become a committee member for an Academic Society	25
Feedback & Development	Attend a Student Leader Development Programme Training session	20
	Complete the Mid-Year Rep Survey	10
	Complete the End of Year Rep Survey	10
	Take part in any other survey sent to Academic Reps	5 (up to six times)
Nominations	Submit a nomination for Rep of the Month	10 (up to three times)
	Receive a nomination for the Education Awards	20
	Nominate yourself for a Faculty Rep position	30
Go Your Own Way	Agree your own goal with the Academic Representation Team	Negotiated value

Signposting



SU Advice & Support Centre

Personal



- Harassment
- Discrimination
- University Complaints
- Disciplinary
- Access to Legal support

Housing



- Finding accommodation
- Contract check or issues
- Moving in
- Council tax
- Landlord Issues
- Disrepair
- Moving out

Academic



- Academic appeals and reviews
- Changing course
- Individual mitigating circumstances
- Assessment offences
- Course complaints
- Preliminary disciplinary procedure

Other



- Disability and impairment support with SU activities
- Free pregnancy tests
- Low cost condoms

If in doubt, direct students to
studentservices@bath.ac.uk or
SUadvice@bath.ac.uk **and they will be**
able to help.

If nothing else remember these

- ★ ABCDE your feedback
- ★ Make sure you raise issues in a timely manner
- ★ Be inclusive
- ★ This is a partnership; work with your academics, your fellow Reps and The SU
- ★ Don't be afraid to ask for help!

THANK YOU!